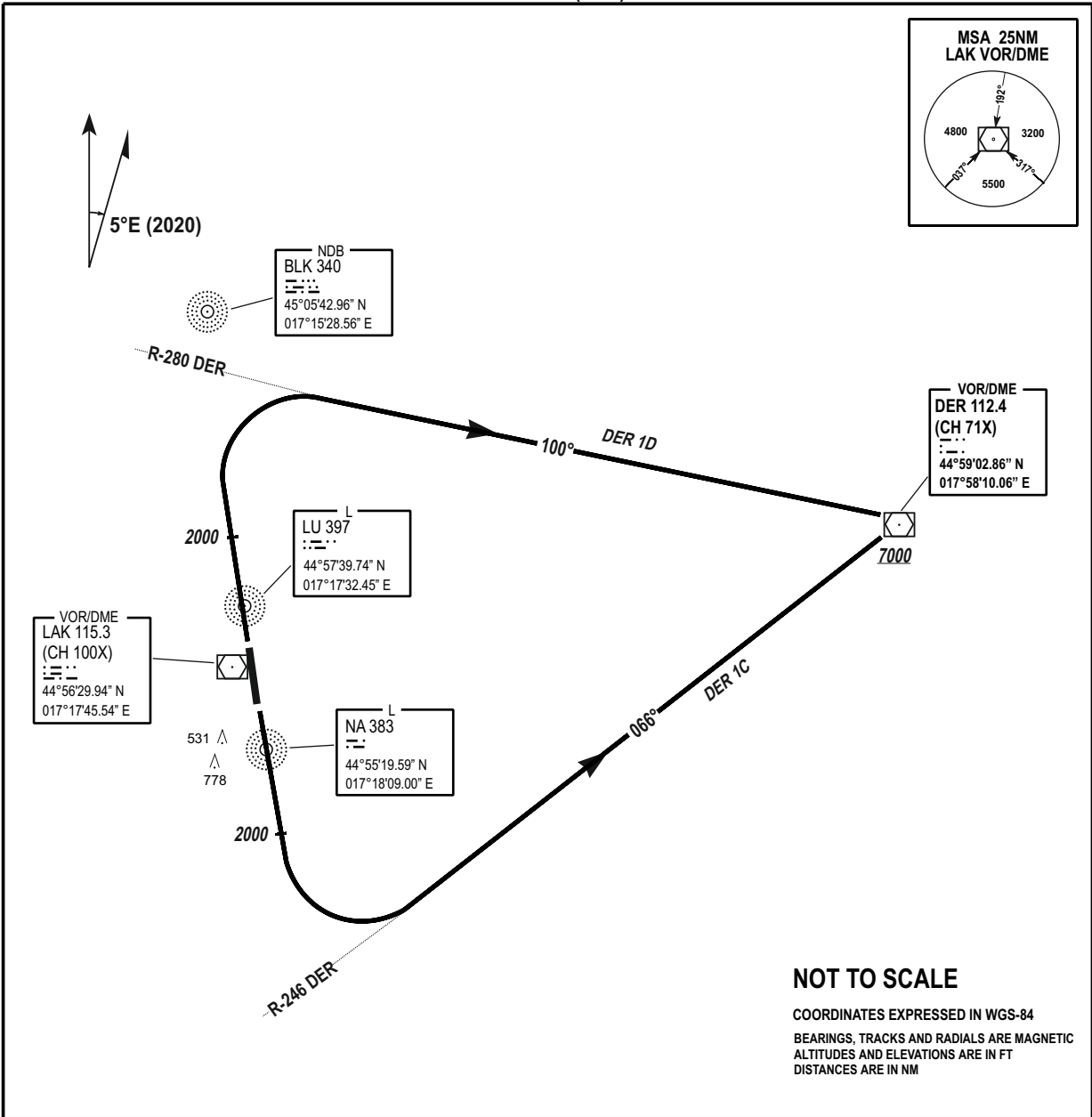


STANDARD DEPARTURE AD ELEV 401 FT
CHART INSTRUMENT
(SID) - ICAO

TRANSITION ALTITUDE 10 000 FT
VAR 5°E (2020)
TWR/APP 133.075
SPARE 124.175

BANJA LUKA (LQBK)
DER 1C / DER 1D



CHG: RADIALS TO DER IN TEXTUAL DESCRIPTION CORRECTED;

MINIMUM REQUIRED CLIMB RATE (FPM)

RWY	%	80	120	150	180	210	250	To
16	8.5%	690	1040	1300	1550	1810	2160	2500
34	5.6%	460	680	860	1030	1200	1420	2500

SID	ROUTEING (Including MNM Noise Routes)
DER 1C (MAG BRG 165°)	Climb on RWY TR to 2000FT, then turn left to TR 066° to intercept and follow R-246 DER to cross VOR/DME DER at or above 7000 FT.
DER 1D (MAG BRG 345°)	Climb on RWY TR to 2000FT, then turn right to TR 100° to intercept and follow R-280 DER. to cross VOR/DME DER at or above 7000 FT.

THIS PAGE INTENTIONALLY LEFT BLANK